

Ventura County  
Air Pollution  
Control District

**New Rule 250**  
**Registration of Agricultural Engines**  
**New Rule 48**  
**Agricultural Engine Registration Fees**

**Workshop**  
**June 5, 2007**

# Background

---

## State Diesel Risk Reduction Plan

- Diesel soot is California's #1 airborne carcinogen
- Goal to reduce emissions in California 85% by 2020

## Airborne Toxic Control Measure for Stationary Compression Engines (ATCM):

- Title 17, CA Code of Regulations, Section 93115

## Airborne Toxic Control Measure for Portable Compression Engines:

- Title 17, CA Code of Regulations, Section 93116



Ventura County  
Air Pollution  
Control District

# Background

---

## State Diesel Risk Reduction Plan

- Diesel soot is California's #1 airborne carcinogen
- Goal to reduce emissions in California 85% by 2020

## Airborne Toxic Control Measure for Stationary Compression Engines (ATCM):

- Title 17, CA Code of Regulations, Section 93115

## Airborne Toxic Control Measure for Portable Compression Engines:

- Title 17, CA Code of Regulations, Section 93116



Ventura County  
Air Pollution  
Control District

# Background

School Bus Idling	December 12, 2002
Nonvehicular Diesel Fuel	July 24, 2003
Residential and Commercial Solid Waste Collection Vehicles	September 25, 2003
In-Use Transport Refrigeration Units and TRU Generator Sets	February 26, 2004
Commercial Motor Vehicle Idling	July 22, 2004
Fleet Rule for Transit Agencies (revised)	February 24, 2005
Commercial Marine Vessels	(adoption pending)



Ventura County  
Air Pollution  
Control District

# Background

---

## District Rule Development Process:

- Workshop - June 5, 2007
- Advisory Committee - July 24, 2007 - 7:30 p.m.
- Air Pollution Control Board - September 11, 2007
- ATCM Time constraints:
  - ➔ 120 days after promulgation by state Office of Administrative Law, District must enforce the ATCM.
    - Registration program must be in place at that time for newly installed engines.
    - Registration required by March 8, 2008.



Ventura County  
Air Pollution  
Control District

# **ATCM Requirements – General**

---

## **For Stationary Agricultural Diesel Engines:**

- Emission limits for in-use engines > 50 hp
- Engine replacement schedule based on emission profile
- Exemptions for:
  - ➔ wind machines,
  - ➔ emergency standby generators,
  - ➔ "remotely located" engines
- Covers primarily irrigation and pump engines
  - ➔ Does not cover engines that propel equipment



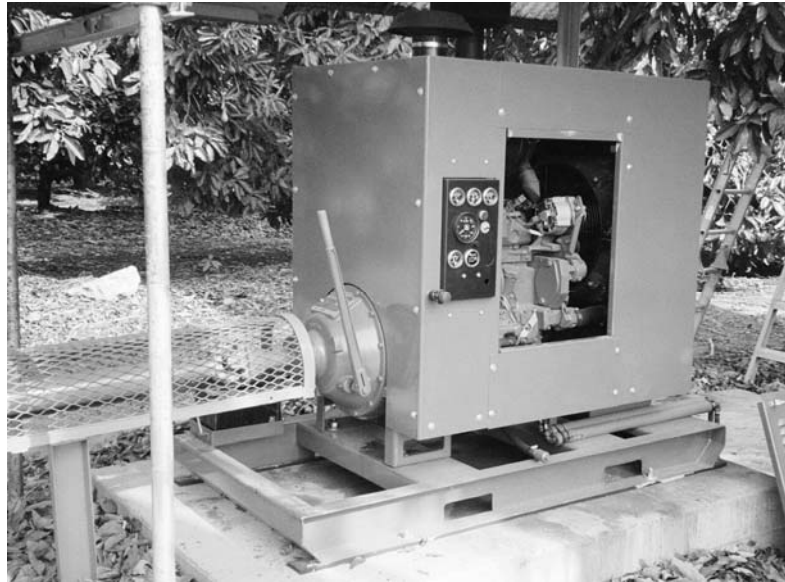
Ventura County  
Air Pollution  
Control District

# ATCM Requirements – General

---

## For Stationary Agricultural Diesel Engines:

- Covers primarily irrigation and pump engines



Ventura County  
Air Pollution  
Control District

# ATCM Requirements – Limits

---

## Requirements for Tier 0 Engines (Pre-1996)\*

<b>Engine Horsepower</b>	<b>Emission Limit Requirement</b>	<b>Compliance Date</b>
> 50 – 99	Tier 3 or Interim Tier 4	Dec. 31, 2011
100 – 174	Tier 3	Dec. 31, 2010
175-750*	Tier 3	Dec. 31, 2010
> 750	Tier 4	Dec. 31, 2014



Ventura County  
Air Pollution  
Control District



# ATCM Requirements – Limits

---

## Requirements for Tier 1 and Tier 2 Engines

Engine Horsepower	Emission Limit Requirement	Compliance Date
> 50 – 174	Tier 4	Dec. 31, 2015*
≥ 175	Tier 4	Dec. 31, 2014*

\* Or 12 years after installation

# Proposed Rule 250

---

## Applicability:

- Any stationary or portable diesel engine used in agricultural operations
- Engines rated at 50 brake horsepower or greater.



Ventura County  
Air Pollution  
Control District

# Proposed Rule 250

---

## Applicability:

- Any stationary or portable diesel engine used in agricultural operations
- Engines rated at 50 brake horsepower or greater.

## Requirements:

- Register before March 1, 2008
- For new engines, register within 90 days of initial installation.



Ventura County  
Air Pollution  
Control District

# Proposed Rule 250

---

## Requirements:

- Register before March 1, 2008
- For new engines, register within 90 days of initial installation.
- To register, provide:
  - ➔ A completed registration form
  - ➔ Additional information requested by the District
  - ➔ The registration fee specified in Rule 48.



Ventura County  
Air Pollution  
Control District

# Proposed Rule 250

---

## Requirements:

- Register before March 1, 2008
- For new engines, register within 90 days of initial installation.
- To register, provide:
  - ➔ A completed registration form
  - ➔ Additional information requested by the District
  - ➔ The registration fee specified in Rule 48.
    - \$200 for each engine



Ventura County  
Air Pollution  
Control District

# Proposed Rule 250

---

## Requirements:

- Register before March 1, 2008
- For new engines, register within 90 days of initial installation.
- To register, provide:
  - A completed registration form
  - Additional information requested by the District
  - The registration fee specified in Rule 48.
- Notify the District within 14 days after any change of owner or operator, any change in location, or the installation of emission control equipment.



Ventura County  
Air Pollution  
Control District

# Proposed Rule 250

---

## Registration Renewal:

- Renew annually
  - ➔ Pay the fee specified in Rule 48
    - \$200 for each engine per year
  - ➔ Update the registration information.
- Registration shall be vacated if:
  - ➔ The renewal fee is not received by March 1<sup>st</sup>
  - ➔ Registration holder has failed to respond to a 30-day notice of delinquent fees.



# Proposed Rule 250

---

**Exemptions:** This rule shall not apply to:

- Agricultural wind machines
- Motor vehicles
- Engines registered in the State PERP Program that are not used as a stationary agricultural engine.



Ventura County  
Air Pollution  
Control District



# Proposed Rule 250

---

**Exemptions:** This rule shall not apply to:

- Agricultural wind machines
- Motor vehicles
- Engines registered in the State PERP Program that are not used as a stationary agricultural engine.

**Violations:**

- Failure to register or return the annual registration plan update form is a violation of this rule.



Ventura County  
Air Pollution  
Control District

# Proposed Rule 250

---

**Exemptions:** This rule shall not apply to:

- Agricultural wind machines
- Motor vehicles
- Engines registered in the State PERP Program that are not used as a stationary agricultural engine.

**Violations:**

- Failure to register or return the annual registration plan update form is a violation of this rule.

**Definitions:**



Ventura County  
Air Pollution  
Control District

# Proposed Rule 250

---

## Definitions:

- "Agricultural Operations"
- "Agricultural Wind Machines"
- "Date of Initial Installation"
- "Diesel Engine"
- "New Engine"
- "Owner or Operator"
- "Rated Brake Horsepower (bhp)"
- "Seasonal Agricultural Operation"
- "Stationary Agricultural Engine"



Ventura County  
Air Pollution  
Control District

# Proposed Rule 250

---

## Definitions:

- "Stationary Agricultural Engine":
  - ➔ The engine is attached to a foundation OR resides at the same agricultural operation for more than 12 consecutive months.
    - Backup, standby or replacement engines count.



# Proposed Rule 250

---

## Definitions:

- "Stationary Agricultural Engine":
  - ➔ The engine is attached to a foundation OR resides at the same agricultural operation for more than 12 consecutive months.
    - Backup, standby or replacement engines count.
  - ➔ The engine is not attached to a foundation and is located at a seasonal agricultural operation for less than 12 consecutive months.



# Proposed Rule 250

---

## Definitions:

- "Seasonal agricultural operation":
  - An agricultural operation that remains in a single location on a permanent basis (at least two years) and operates at that single location at least three months each year.



# Proposed Rule 250

---

## Definitions:

- "Stationary Agricultural Engine":
  - ➔ The engine is attached to a foundation OR resides at the same agricultural operation for more than 12 consecutive months.
    - Backup, standby or replacement engines count.
  - ➔ The engine is not attached to a foundation and is located at a seasonal agricultural operation for less than 12 consecutive months.
  - ➔ The engine is moved to circumvent the 12 month residence time requirement.



# Proposed Rule 250

---

## Definitions:

- "Stationary Agricultural Engine":
  - ➔ The engine is moved to circumvent the 12 month residence time requirement.
  - ➔ The engine is moved around a agricultural operation under the same or common ownership, operation, or control, or owned or operated by entities which are under common control, but not necessarily located on contiguous or adjacent properties, and performs the same primary function at each location.





# Proposed Rule 250

---

## Stationary Agricultural Engine (Summary):

- Attached to a foundation or resides at the same agricultural operation for more than 12 consecutive months.
- Not attached to a foundation and is located at a seasonal agricultural operation for less than 12 consecutive months.
- Moved from one agricultural operation to another to circumvent the 12 month requirement.
- Moved around a agricultural operation under the same or common ownership, operation, or control, but not necessarily located on contiguous or adjacent properties.



# Proposed Rule 250

---

## South Central Coast Air Basin Reciprocity :

- An engine registered with the Santa Barbara or San Luis Obispo County Air Pollution Control Districts will be considered registered with the VCAPCD if:
  - ➔ The District where the engine is registered has equivalent registration requirements as VCAPCD.
  - ➔ The registration fee at the District where the engine is registered is within 15% of the VCAPCD fee.
  - ➔ The District where the engine is registered also allows engines registered in VCAPCD to be considered registered in their District.



Ventura County  
Air Pollution  
Control District

# Proposed Rule 250

---

## South Central Coast Air Basin Reciprocity :

- Registrations for engines operating under the exception for “Remotely-located Agricultural Engines” are not valid for use at multiple locations unless written approval is obtained from the Air Pollution Control Officer in the county where the engine is proposed to be relocated.

This includes relocation within the county where the engine is registered.

- Does not apply in Ventura County
  - We do not meet the Federal ozone standard



Ventura County  
Air Pollution  
Control District

# **Summary of Proposed Rules**

---

## **Rule 250:**

- Register all agricultural diesel engines 50 HP or more.
  - ➔ Deadline - March 1, 2008
  - ➔ Provide information and keep updated
  - ➔ Renew registration annually
- Wind machines, vehicles, & PERP exempt
- Reciprocity with Santa Barbara and SLO

## **Rule 48**

- Initial and Annual Fee of \$200



Ventura County  
Air Pollution  
Control District

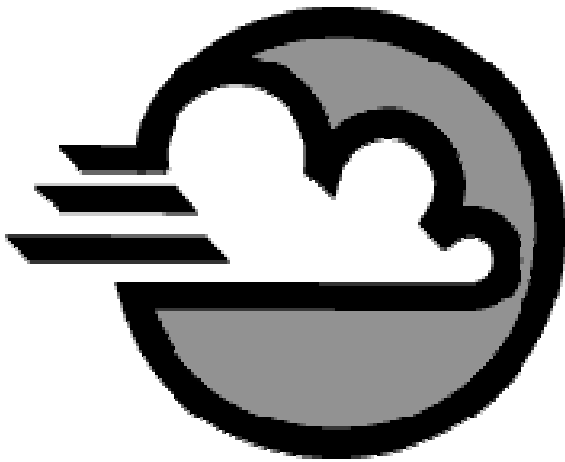
# Incentive Programs

---

## The ATCM Staff Report states:

- "There are several incentive programs which could play an important role in providing early emissions reductions by encouraging growers to voluntarily replace existing ... engines with electric motors or new, cleaner Tier-3 or Tier-4 certified engines... Incentive programs such as these are expected to encourage compliance with the proposed amendments..."





**Ventura County  
Air Pollution  
Control District**

# Background

---

## Airborne Toxic Control Measure for Stationary Compression Engines (ATCM):

- Title 17, CA Code of Regulations, Section 93115
- First adopted by ARB on February 26, 2004
  - Effective on 12/8/04
- ATCM amended twice:
  - First amendments effective 9/9/2005
  - Second amendments not yet effective



Ventura County  
Air Pollution  
Control District

# Background

---

## Airborne Toxic Control Measure for Portable Compression Engines:

- Title 17, CA Code of Regulations, Section 93116
  - ➔ Applies to agricultural sources
  - ➔ Earlier compliance dates
  - ➔ No remote location exemptions
  - ➔ Fleet averaging provisions
  - ➔ Does not require registration
- Rule synchronization and coordination issues are under consideration by ARB and the air districts



Ventura County  
Air Pollution  
Control District



# Proposed Rule 250

---

## Additional information requested by the District:

- Date of registration application
- Info on the responsible official
- Info on the engine owner / operator
- Date of installation or anticipated installation
- Year of manufacture or approximate age
- Make, model and serial number
- Maximum rated brake horsepower
- Off-Road CI Engine Certification Standard status
- Estimated annual average operating hours
- Fuels Used and estimated annual fuel use (gallons)
- Location information
- More info if near a residential area, school, or hospital
- Is it stationary or portable ? (as defined)



Ventura County  
Air Pollution  
Control District

# Proposed Rule 250

---

## ATCM definition of "Remotely Located":

- No receptors within one-half mile
- Located in federal attainment area for Particulate Matter (PM) and ozone
- Limited to 200 hr/yr (Tier 1) or 600 hr/yr (Tiers 2,3,4)
  - Must register and apply for exemption
  - Upon loss of exemption, must comply in 18 months
  - While exempt, ATCM emission standards do not apply



# Proposed Rule 48

---

## Agricultural Engine Registration Fee:

- An owner or operator required to register an applicable agricultural engine shall pay the fee specified in Section C of this rule upon application and annually thereafter. Until March 1, 2008, the initial registration fee shall cover the time period from application to March 1, 2009. The registration renewal fee shall cover the period from March 1st to the last day of February in the following year. All fee payments are non-refundable.
- For either an initial registration or a registration renewal, an agricultural diesel engine, as defined in Rule 250, Section F, shall pay a fee of \$200.00.



# Proposed Rule 48

---

## Agricultural Engine Registration Fee:

- For either an initial registration or a registration renewal, an agricultural diesel engine, as defined in Rule 250, Section F, shall pay a fee of \$200.00.
- If, as determined by the Air Pollution Control Officer, an engine requires more than one inspection per year to determine compliance with any applicable federal, state or District order, rule or regulation, an additional fee shall be paid to recover the cost of such inspection. This fee shall be assessed at the hourly service rate for an Air Quality Engineer as approved by the Ventura County Air Pollution Control Board.



Ventura County  
Air Pollution  
Control District

# Proposed Rule 48

---

## Agricultural Engine Registration Fee (Summary):

- Until March 1, 2008, the initial registration fee shall cover the time period from application to March 1, 2009. The registration renewal fee shall cover the period from March 1st to the last day of February in the following year.
- For either an initial registration or a registration renewal, an agricultural diesel engine shall pay a fee of \$200.00.
- If an engine requires more than one inspection per year, an additional fee shall be paid. This fee shall be assessed at the hourly service rate for an Air Quality Engineer as approved by the Ventura County Air Pollution Control Board.



Ventura County  
Air Pollution  
Control District

# Portable Engine ATCM

---

## Requirements for Portable Engines

<b>Engine Horsepower</b>	<b>Emission Limit Requirement</b>	<b>Compliance Date</b>
All, except	Tier 1, 2 or 3	Jan. 1, 2010
Emergency & Low-use	Tier 4	Within 2 yrs of availability
Emergency & Low-use	Tier 4	Jan. 1, 2020



Ventura County  
Air Pollution  
Control District

# Tier Engine Designations

---

EPA designation for new mobile nonroad diesel engines

<b>Tier Level</b>	<b>Engine Size</b>	<b>Dates</b>	<b>PM Limit (g/bhp-hr)</b>
Tier 0	Not specified	Pre-1996	Not certified
Tier 1	25 – 750 HP	1996-2000	0.40 – 0.60
Tier 2	25 – 750 HP	2001-2006	0.15 – 0.45
Tier 3	50 – 750 HP	2006-2008	Tier 2
Tier 4	25 – 750 HP	2011-2014	0.02 – 0.03



Ventura County  
Air Pollution  
Control District